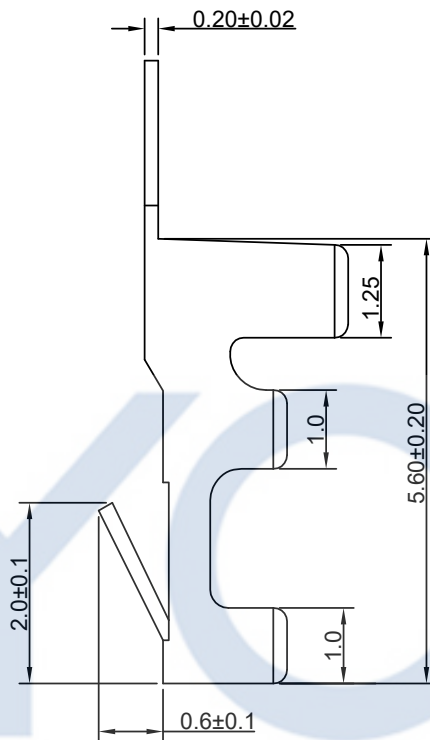
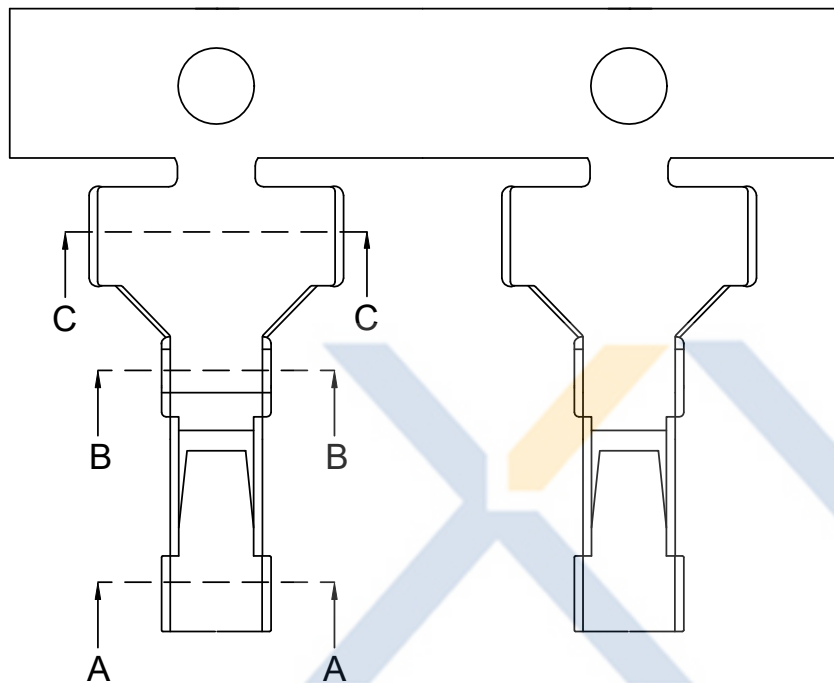


DRAWING FOR CUSTOMER



- SPEC.:
- Rated Voltage:250V AC,DC
 - Rated Current::2.5A AC,DC
 - Withstand Voltage:1000V AC/minute
 - Contact Resistance:20mΩ max
 - Insulation Resistance:1000MΩ min
 - Temperature Range:-25°C~+85°C

- Terminal
- Material:Brass
 - Finish: Tin-plated,over Nickel
 - Applicable wire:AWG#22~28
Insulation OD:1.60mm max
 - QTY.:12PCS/Reel

KB1018-1 0 T 1 A

1:All plated
2:Half plated

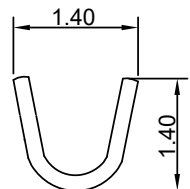
Version

Plating

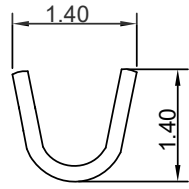
0: Tin-plat
1: Gold Plat1u"
2: Gold Plat3u"
3: Gold Plat5u"

Mold No.

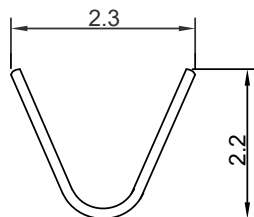
Terminal



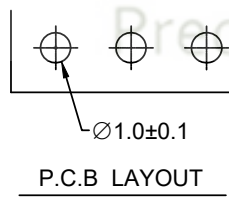
Section:A-A



Section:B-B



Section:C-C



P.C.B LAYOUT

XYCO 东莞市轩业电子科技有限公司
TEL: 0769-8297 9981/2/3 <http://www.XYCO.com.cn>

2017-12-01		A	KB1018-10T1A		Devin	TOLERANCE 公差	DRAWING 設計者	Devin	KB1018-10T1A	
DATE 日期	VER 版本	CHANGE HISTORY 變更歷史		CHANGED NAME 修改後料號	DRAWING 變更者	.X=±0.30 .XX=±0.20 .XXX=±0.10	CHECKED 審查	Thomas	PART NO. 料號	UNIT 單位
							APPROVED 核准	William	DWG NO. 圖號	mm
									PE1712005A	PRODUCT NAME 產品名稱

1018 SIN1.0 Terminals	
-----------------------	--