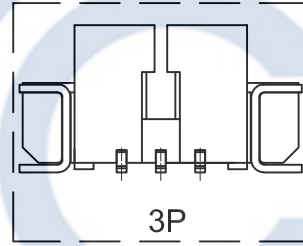
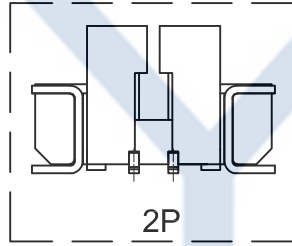
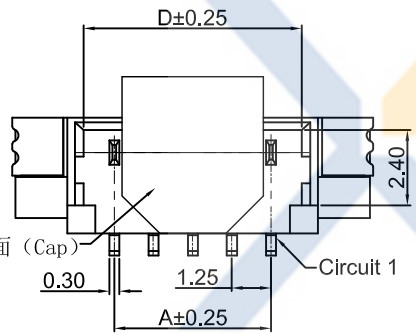
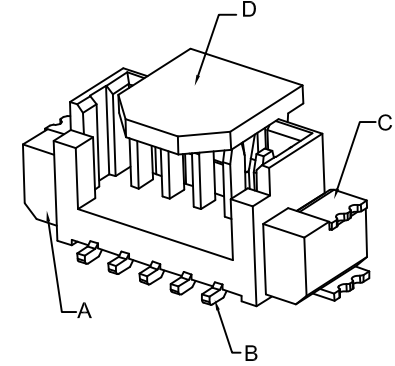
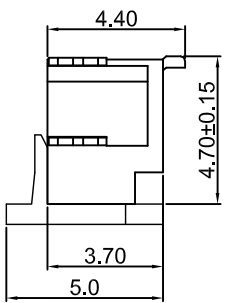
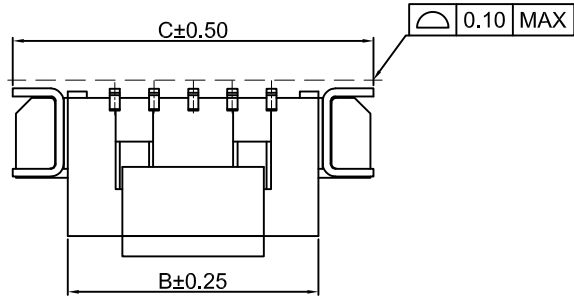


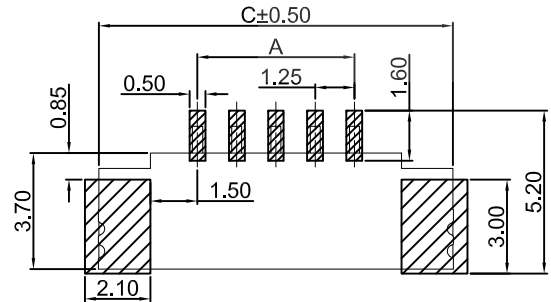
DRAWING FOR CUSTOMER



KB915-XX X S V 6 A-C1- XX

Pin No. Color
 包装方式: Material
 T:TUBE (管装) Version
 R:REEL (卷装) Mold No.
 P: PE (袋装) R:Right Angle
 S:SMT V:Vertical
 D:DIP

- SPEC.:
- Rated Voltage:125V AC,DC
 - Rated Current:1A AC,DC
 - Withstand Voltage:500V AC/minute
 - Contact Resistance:20mΩ max
 - Insulation Resistance:100MΩ min
 - Temperature Range:-25℃~+105℃
- Material
- Insulator(A):C1-LCP UL94V-0
 - Color:BGE-Beige;BK-Black
 - Contact(B):Phosphor Bronze
 - Finish:Tin-Plated,over Nickel
 - Solder Tab(C):Brass
 - Finish:Tin-Plated,over Nickel
 - CAP:LCP UL94V-0;
 - Color:BGE-Beige



SUGGESTED PCB LAYOUT

Poles	Dimensions(mm)			
	A	B	C	D
02	1.25	4.25	7.75	3.20
03	2.50	5.50	9.00	4.45
04	3.75	6.75	10.25	5.70
05	5.00	8.00	11.50	6.95
06	6.25	9.25	12.75	8.20
07	7.50	10.50	14.00	9.45
08	8.75	11.75	15.25	10.70
09	10.00	13.00	16.50	11.95
10	11.25	14.25	17.75	13.20
11	12.50	15.50	19.00	14.45
12	13.75	16.75	20.25	15.70
13	15.00	18.00	21.50	16.95
14	16.25	19.25	22.75	18.20
15	17.50	20.50	24.00	19.45
16	18.75	21.75	25.25	20.70

XYCO 东莞市轩业电子科技有限公司
 TEL: 0769-8297 9981/2/3 http://www.XYCO.com.cn

DATE	VER	CHANGE HISTORY	CHANGED NAME	DRAWING	TOLERANCE	DRAWING	Devin	KB915-XXXSV6A-C1-XX
日期	版本	变更历史	修改后料号	变更者	公差	设计者	Devin	KB915-XXXSV6A-C1-XX
2013-09-20	A		KB915-XXXSV6A-C1-XX	Devin	.X=±0.30	CHECKED	Thomas	PART NO. 料号
					.XX=±0.20	APPROVED	William	DWG NO. 图号
					.XXX=±0.10			PE3107A

UNIT	mm	PRODUCT NAME	53398 PH1.25mm Wire To Board
單位	mm	產品名稱	SMT Vertical Wafer