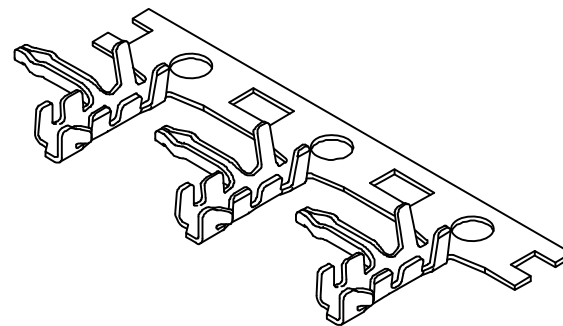
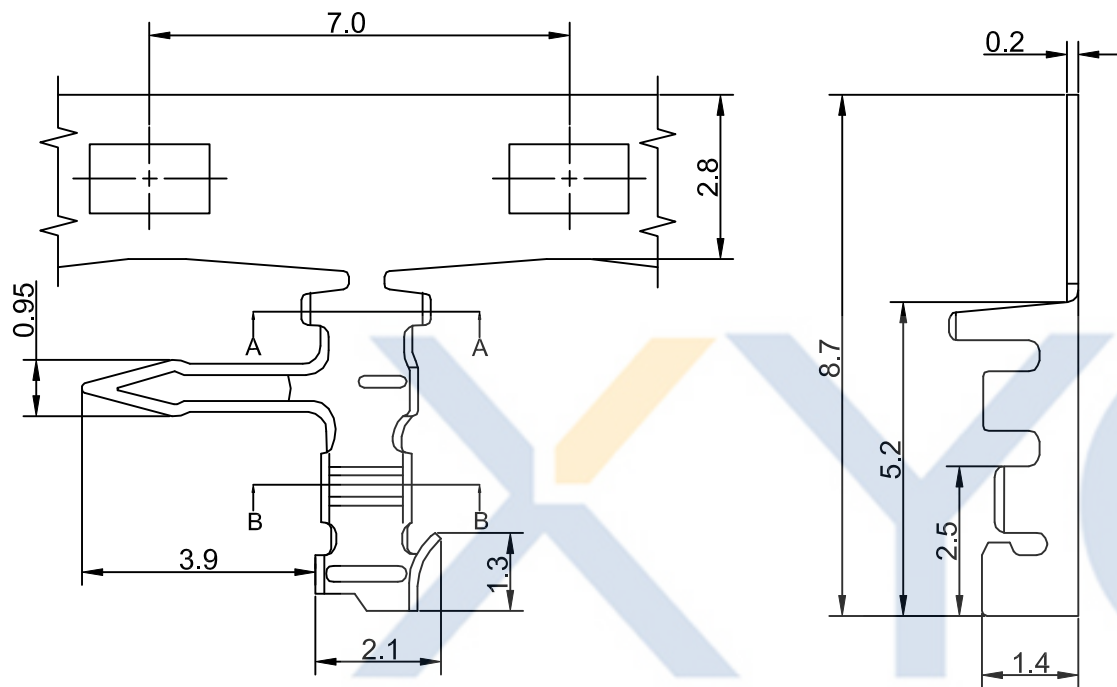


DRAWING FOR CUSTOMER



KB9314-XXT3A

1:All plated
2:Half plated

Plating
0: Tin-plat
1: Gold Flash
2: Gold Plat3u"
3: Gold Plat5u"

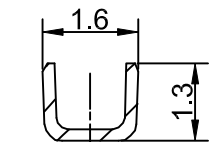
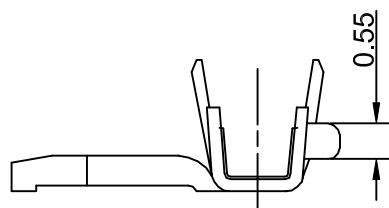
Version

Mold No.

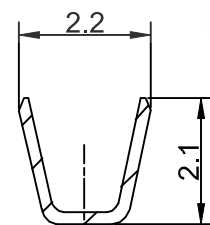
Terminal

- SPEC.:
- Rated Voltage:250V AC,DC
 - Rated Current:2A AC,DC
 - Withstand Voltage:800V AC/minute
 - Insulation Resistance:1000MΩ min
 - Temperature Range:-25℃~+85℃

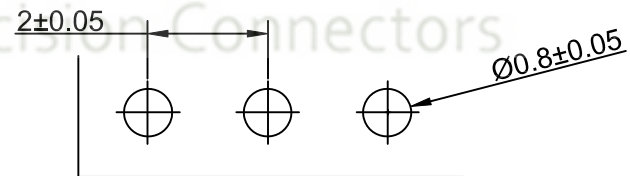
- Terminal:
- Material:Phosphor Bronze
 - Finish:Tin-plated,over Nickel
 - Applicable wire:AWG#24~30
 - QTY.:11KPCS/Reel



Section:B-B



Section:A-A



P.C.B LAYOUT

XYCO 东莞市轩业电子科技有限公司
TEL: 0769-8297 9981/2/3 http://www.XYCO.com.cn

					TOLERANCE 公差	DRAWING 設計者	Devin	KB9314-XXT3A			
2015-09-20	A	CHANGE HISTORY 變更歷史	KB9314-XXT3A	Devin	.X=±0.25	CHECKED 審查	Thomas	PART NO. 料號			
DATE 日期	VER 版本				.XX=±0.13	APPROVED 核准	William	DWG NO. 圖號	PE1807043A	UNIT 單位	mm
					.XXX=±0.08					PRODUCT NAME 產品名稱	JC20-T Wire To Board Terminal

UNIT 單位	mm	PRODUCT NAME 產品名稱	JC20-T Wire To Board Terminal
------------	----	----------------------	----------------------------------