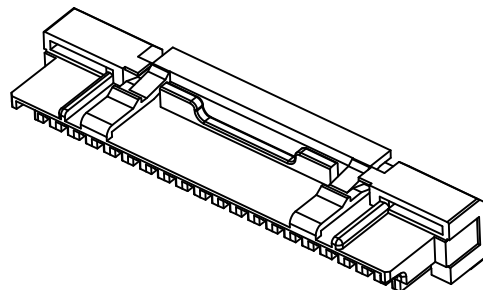
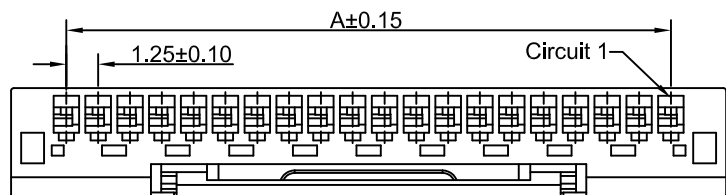


# DRAWING FOR CUSTOMER

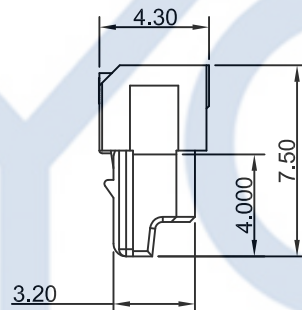
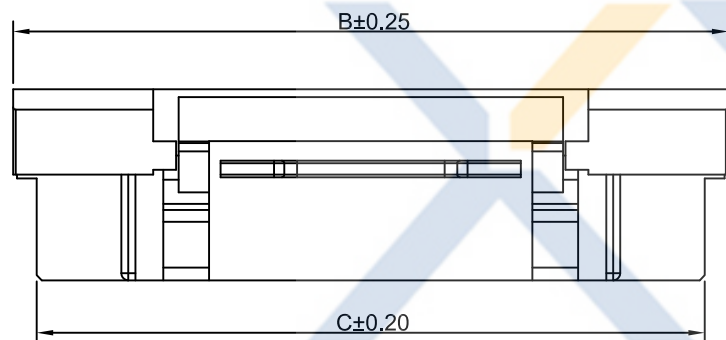


■SPEC.:

- Rated Voltage:200V AC,DC
- Rated Current:1.5A AC,DC
- Withstand Voltage:1000V AC/minute
- Contact Resistance:20mΩ max
- Insulation Resistance:1000MΩ min
- Temperature Range:-25℃~+85℃

■Material:

- Insulator:B1-PA66 & C1-LCP UL94V-0
- Color:Beige



KB9110-XX H L 3 A -XX

Pin No.

Housing

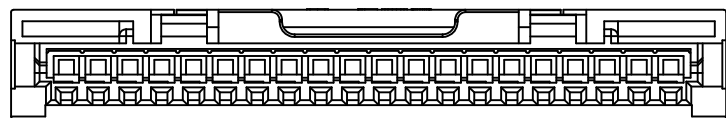
With Lock

Material

Version

Mold No.

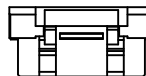
20P Shape Scale 1:1



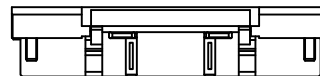
05P Scale 1:2



15P Scale 1:2



10P Scale 1:2



25P Scale 1:2

Poles	Dimensions(mm)		
	A	B	C
05	5.00	9.35	7.50
10	11.25	15.60	13.75
15	17.50	21.85	20.00
20	23.75	28.10	26.25
25	30.00	34.35	32.50

**XYCO** 东莞市轩业电子科技有限公司  
 TEL: 0769-8297 9981/2/3 <http://www.XYCO.com.cn>

					TOLERANCE 公差	DRAWING 設計者	Devin	KB9110-XXHL3A-XX			
2015-06-18	A	CHANGE HISTORY 變更歷史	KB9110-XXHL3A-XX	Devin	.X=±0.30	CHECKED 審查	Thomas	PART NO. 料號			
DATE 日期	VER 版本				.XX=±0.20	APPROVED 核准	William	DWG NO. 圖號	PE1803012A	UNIT 單位	mm
					.XXX=±0.10					PRODUCT NAME 產品名稱	104092 PH1.25mm Wire To Board Housing

