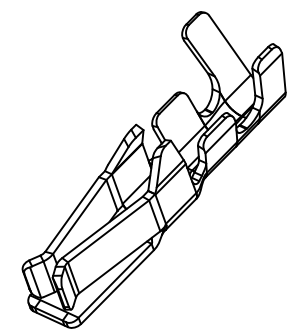
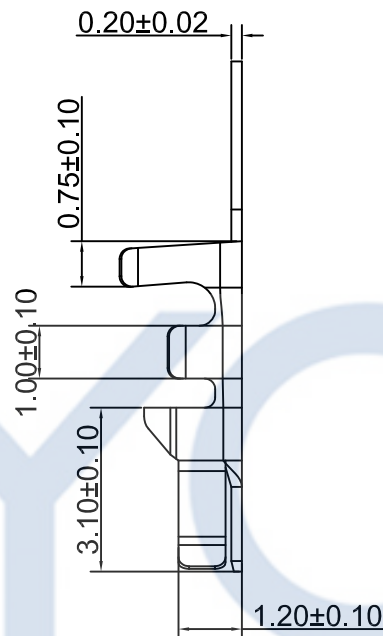
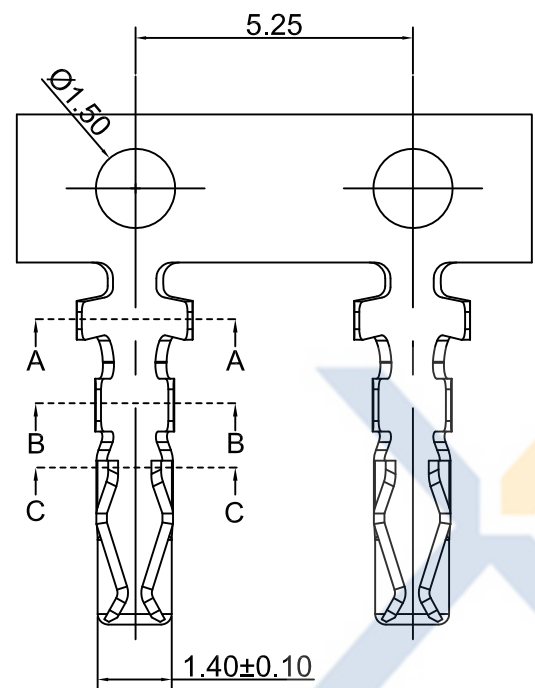
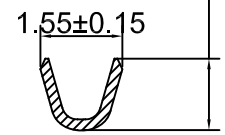
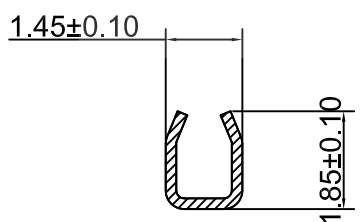
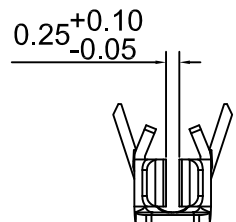


DRAWING FOR CUSTOMER



- SPEC.:
- Rated Voltage:250V AC,DC
 - Rated Current:3A AC,DC
 - Withstand Voltage:1000V AC/minute
 - Contact Resistance:40mΩ max
 - Insulation Resistance:100MΩ min
 - Temperature Range:-25℃~+85℃
- Terminal:
- Material:Phosphor Bronze C5191
 - Finish:Tin-plated,over Nickel
 - Applicable wire:AWG#24~30
 - QTY.:10KPCS/Reel



Section:C-C

Section:B-B

Section:A-A

KB935-X X T 1 A

- 1:All plated
 - 2:Half plated
- Plating
- 0: Tin-plat
 - 1: Gold Plat1u"
 - 2: Gold Plat3u"
 - 3: Gold Plat5u"
- Version
- Mold No.
- Terminal

XYCO 东莞市轩业电子科技有限公司
TEL: 0769-8297 9981/2/3 <http://www.XYCO.com.cn>

2016-06-20	A-1	优化产品	KB935-XXT1A	Devin	TOLERANCE 公差	DRAWING 設計者	Devin	KB935-XXT1A		UNIT 單位		mm	PRODUCT NAME 產品名稱	PHS PH2.00 Wire To Board Terminal
2014-06-20	A		KB935-XXT1A	Devin	.X=±0.30 .XX=±0.20 .XXX=±0.10	CHECKED 審查	Thomas	PART NO. 料號						
DATE 日期	VER 版本	CHANGE HISTORY 變更歷史	CHANGED NAME 修改後料號	DRAWING 變更者		APPROVED 核准	William	DWG NO. 圖號	PE5004A	UNIT 單位				